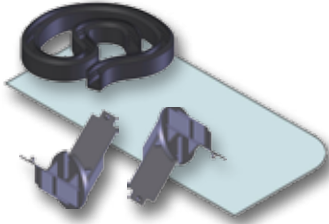


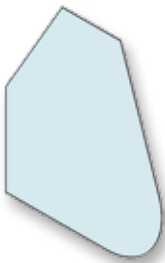
# SNEEZE GUARD ACCESSORIES



## ACRYLIC REPLACEMENT KIT

PART # 3400 2 FT.\*  
PART # 3500 3 FT.\*  
PART # 3600 4 FT.\*  
PART # 3700 5 FT.\*\*  
PART # 3800 6 FT.\*\*  
PART # 3880 8 FT.  
OR CUSTOM LENGTH

- EASY FIELD REPLACEMENT FOR DAMAGED OR WORN ACRYLIC FOOD SHIELDS, COMPLETE WITH SHIELD, GASKET, AND CORNER CONNECTORS.



## FULL END PANEL

PART # 3945\*  
PART # 3948\*\*  
PART # 3952\*\*\*

- OPTION TO RESTRICT ACCESS BY PATRONS AT THE ENDS OF THE SERVICE LINE.

\* SINGLE SIDE STATIONARY  
\*\* SINGLE SIDE PORTABLE  
\*\*\* SINGLE SIDE HI-PROFILE



## SAMPLER END PANEL

PART # 3944

- OPTION TO RESTRICT ACCESS BY PATRONS AT THE ENDS OF THE SERVICE LINE.

*\*UPS classified as 35 lbs Oversize 1*

*\*\*UPS classified as 52 lbs Oversize 2*

\* Images are computer renderings, not actual photos, some color variance may occur from what is rendered to the actual powder coat finish.

Phone: 800-569-2056  
Fax: 573-449-7126  
[www.sneezeguardsolutions.com](http://www.sneezeguardsolutions.com)